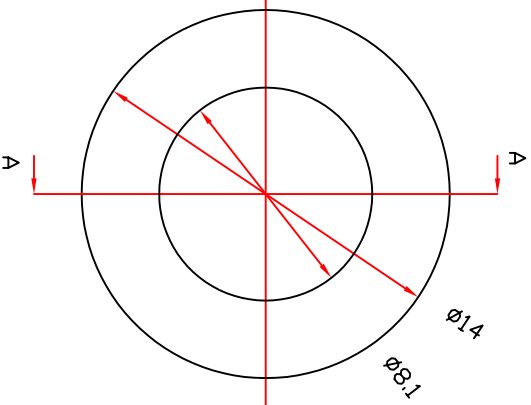
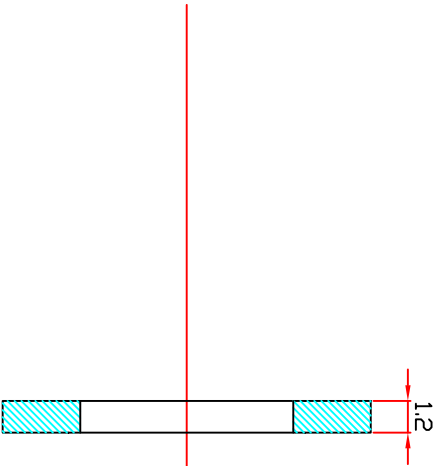


- NOTES:
- 1) Tolerances unless stated:
Linear: $\pm 0.1\text{mm}$,
Angular: $\pm 0.25^\circ$
 - 2) Remove all burrs
 - 3) Do not scale
 - 4) Surface texture $\sqrt{1.6}$
 - 5) 2 discs are required for each shuttle magnet



Section A : A

THIRD ANGLE PROJECTION DRAWING PREPARED IN ACCORDANCE TO BS308		GENERAL SURFACE FINISH: $\mu\text{m CLA R}_a$ UNLESS OTHERWISE STATED		DIMENSIONS : mm	
MATERIAL CERAMIC - Machinable Glass		HEAT & SURFACE TREATMENT		TITLE MICE TARGET - Ceramic disc	
ALL PROPRIETARY RIGHTS IN THE SUBJECT MATTER HEREOF ARE RESERVED BY SHEFFIELD UNIVERSITY AND NO PERMISSION IS GRANTED TO REPRODUCE THIS PRINT, IN WHOLE OR IN PART, OR TO DISCLOSE ANY OF THE INFORMATION UPON IT TO OTHERS.		ISSUE DATE 4/01/08		INITIAL ISSUE NOTES MM APP.	
SCALE: 10 : 1		DATE: 4/01/08		DRAWING NUMBER TD-SU-23	
DRAWN: M. MOHAMMAD		RAL REF.		UNIVERSITY OF SHEFFIELD DEPARTMENT OF PHYSICS & ASTRONOMY SHEFFIELD S3 7RH Tel: 0114-2223543	
A4		A4		A4	